

# THE ADVENTURE - 2022



## ADVENT LUTHERAN CHURCH

### OUR MISSION – FAITHFUL IN THE WORD

- + To *gather* as God's people and nurture one another
- + To *know* the Word of God
- + To *grow* in faith, love, and service
- + To *go* into the world with the Good News of Jesus Christ



Rev. Matthew E. Ollikainen, Pastor  
45 Worthington Mill Rd.  
Richboro, PA 18954  
215-355-2529  
web: [www.adventrichboro.org](http://www.adventrichboro.org)  
e-mail: [office@adventrichboro.org](mailto:office@adventrichboro.org)

Advent Evangelical Lutheran Church continues to worship indoors and online. Mask wearing at Advent is optional for the fully vaccinated and recommended for the unvaccinated and immunocompromised. Based on Center for Disease Control, local governmental and church authorities' recommendations, Advent continues to have these precautions:

- Respect for those who choose to mask or not mask
- Social distancing
- Sanitizing hands and objects handled
- Staying home if you have any symptoms of illness or have been in close contact with anyone with COVID.
- The availability of online worship and the use of zoom for meetings.

Our leadership will continue to gauge the situation week by week and will keep the congregation informed of any adjustment to our precautions.





## **DECEMBER SUNDAYS OF WORSHIP SCHEDULE**

### **DECEMBER 4**

#### **SECOND SUNDAY OF ADVENT**

- 8:00 a.m. Traditional Holy Communion
- 9:00 a.m. Adult Bible Study
- 9:30 a.m. Contemporary Holy Communion  
Sunday School age 4 - grade 6
- 10:45 a.m. **Annual Christmas Brunch**

### **DECEMBER 11**

#### **THIRD SUNDAY OF ADVENT**

- 8:00 a.m. Traditional Holy Communion
- 9:00 a.m. Adult Bible Study
- 9:30 a.m. Contemporary Holy Communion  
Sunday School age 4 - grade 6
- 10:30 a.m. Fellowship Time: George Henry
- 10:45 a.m. Church Council Meeting

### **DECEMBER 18**

#### **FOURTH SUNDAY OF ADVENT**

- 8:00 a.m. Traditional Holy Communion
- 9:00 a.m. Adult Bible Study
- 9:30 a.m. Contemporary Holy Communion  
Sunday School age 4 - grade 6
- 10:30 a.m. Fellowship Time: Open
- 10:45 a.m. Adult Bible Study



### **SATURDAY, DECEMBER 24**

#### **CHRISTMAS EVE**

- 7:00 p.m. Family Candle Light Service  
Lessons & Carols with Holy Communion
- 9:00 p.m. Candlelight Service with Holy Communion



### **SUNDAY, DECEMBER 25**

#### **NATIVITY OF OUR LORD**

- 9:00 a.m. Holy Communion Worship Service

## **ONLINE WORSHIP INFORMATION**

Sunday service may also be attended by Zoom and it will be live streamed on Facebook.

A recording of the service will be uploaded to YouTube and linked to our website immediately after the service concludes.

### **Regular Scheduled Zoom Services:**

**8:00 a.m. Topic: Advent Lutheran Church Traditional Holy Communion**

**Meeting ID: 891 9503 9877      Pass code: 443533**

**<https://us02web.zoom.us/j/89195039877?pwd=dnVRTlRGamJQVXNZbENlVDJTT0pnUT09>**

**9:30 a.m. Topic: Advent Lutheran Church Contemporary Holy Communion**

**Meeting ID: 854 0562 9972      Pass code: 506714**

**<https://us02web.zoom.us/j/85405629972?pwd=aGErSFNlbVAvNmZsQkIzWVpTTktlQT09>**

### **Christmas Eve Services**

**7:00 p.m. Christmas Eve Service 2022**

**Meeting ID: 893 2031 5353      Pass code: 434888**

**<https://us02web.zoom.us/j/89320315353?pwd=UVZXdzNGQ1doUFJyZzlpUnRMVmJMdz09>**

**9:00 p.m. December 24 Advent Christmas Eve Service**

**Meeting ID: 812 5579 8308      Pass code: 814888**

**<https://us02web.zoom.us/j/81255798308?pwd=ekZxay9wSWhEN3dFMzZWVhZG9kdz09>**

### **Christmas Day Service**

**9:00 a.m. Christmas Day Service 2022**

**Meeting ID: 835 7312 4650      Passcode: 385899**

**<https://us02web.zoom.us/j/83573124650?pwd=anlUVzkxZWpGT3R3SGhuMkM4elpRQT09>**

~~~~~

## **SOCIAL MINISTRY**



**GIFT CARDS FOR SHARING:** As we have done the last two years we are collecting gift cards from local stores, i.e. Giant, Walmart, Aldi and ShopRite they will be distributed to clients at the Warminster Food Bank during the month of December. The response from the congregation the last 2 years has been generous! We hope for the same result again this year.

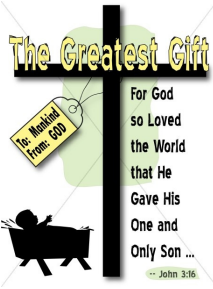
Look for the red tin of envelopes on the offering table. If you are donating more than one gift card, please take an envelope for each card.

If you would like to send in a donation, please use the church street address which is 45 Worthington Mill Road, Richboro, PA 18954, you can make the check payable to the Warminster Food Bank and it will be dropped off with the gift cards. It is a difficult year for many. Your generosity is greatly appreciated.

**FOOD DONATIONS:** When you have food that you or your friends would like to donate and the church is not open, just drive up to the main entrance and leave your donation inside the bench outside the door. You may still bring food into the building during church and office hours. For suggestions on which items are requested each week, go to: [www.warminsterfoodbank.org](http://www.warminsterfoodbank.org).

## Pastor Matt's December Newsletter 2022

When people think of Christmas they think of many things. There is mistletoe, candy canes, Christmas trees and presents. There is shopping, cooking and time with family. You can already turn on the radio and hear Christmas music. Santa is coming to a mall near you. There is Christmas caroling, hot chocolate and cookies. The cantata, the Christmas pageant and Christmas Eve services to attend. Of course, we think of the baby Jesus born in a manger surrounded by Mary, Joseph, animals, shepherds, Angel choirs singing Alleluia, and a great big star in the sky. There are a lot of things we think about at Christmas time.



Have you ever thought about just how **BOLD** of an act of God the birth of Jesus is? Certainly child birth is miraculous in itself. The gift of a new life is a pure miracle. When Jesus is born, God is doing something extra special. In fact, it is the most special thing to have ever happened. But you may already know this. You may already know that Jesus is the Messiah. You know that through Jesus' death and resurrection we all receive forgiveness of our sins, a permanent relationship with God and eternal salvation. These facts certainly make Jesus' birth special. The Messiah had to come into this world somehow, right? But these facts have more to do with Easter than they do with Christmas.

### So, what makes Christmas so bold?

It has to do with the fact that God could have sent His son Jesus into the world anyway he wanted. When we read the first chapter of the Gospel of John we discover that Jesus was around long before he was born into human form on a night two thousand years ago. The Son of God was present as the Word at the moment of creation way back who knows when. There is no reason why Jesus could not have just appeared on earth as a full-grown man and started his ministry if that is what he wanted. Many people in Jesus' day were looking for a Messiah. They were looking for a savior and with good reason. The Roman Empire was oppressing God's people. The world was filled with senseless violence and warfare. Diseases afflicted the people. Some viewed the priests in the temple of Jerusalem as being corrupt. Folks were looking for a Messiah who would be a conquering king like King David, a great prophet or a mighty priest. They were looking for a leader like Moses who would bring the wrath of God down on their enemies. Jesus could have just descended from heaven and done all these things and more. Instead, Jesus came as a baby boy.

In many ways the world today craves for a Messiah much the same way people did in Jesus' day. As we think about the things that are Christmas, many of us will be thinking of the people, especially loved ones for whom we are concerned. Many of us will be worried about our own health as the pandemic still persists. With shaky economic times, many of us will be worried about just how much we can spend this holiday season. We live in a world of turmoil and division. In a way, we, like the people of Jesus' day, are looking for answers. We too are looking for saviors and messiahs. It is easy to wish God to simply strike down the people and things that threaten us. That Jesus would simply cure all diseases. That pollution and global warming would just simply not exist. But God is much **BOLDER** than this. God does not fight war with war. God does not fight hate with hate or fire with fire. To cure all diseases does not address the root cause of disease: mortality. God is not content with just cleaning up the blunders of humanity. A conquering Jesus of thunder and raw power is not enough. A Jesus who heals every physical need is not enough. A vengeful Jesus will not do. Instead of all of these, God is so **BOLD** that He sends His son to us as a helpless baby born to peasant circumstances; a baby of complete innocence in who there is no hate or evil; a baby who when his eyes first gaze upon the world are filled with a love of the purest kind. It is this kind of love that the world needs more than any thing else.

May you know the **BOLDNESS** of God's love in your life this Christmas season.

Christmas Blessings  
To you and yours,  
Pastor Matt



### **POINSETTIA LIST**

A sign-up sheet for dedicating poinsettias for Christmas Eve is on the table in the narthex. The cost is **\$15 per plant**. Please sign up by **December 13**. You can also call the office to leave your dedication. Poinsettias may be picked up anytime after the 9 p.m. service on Christmas Eve.



### **CHRISTMAS BRUNCH - SUNDAY, DECEMBER 4**

Advent's annual Christmas brunch will be held on Sunday, December 4, 2022 in the Fellowship Hall immediately after the 9:30 worship service. For those who are able, please bring hot or cold breakfast and/or lunch items to share with everyone into the church kitchen prior to the 9:30 a.m. service. Suggestions include breakfast meats, pancakes, waffles, casseroles, vegetables, salads, pastry, breads, fruit, desserts, your favorite dish, or whatever you wish. The oven in the kitchen will be available to warm up items and Advent will supply paper products, as well as cold and hot beverages. This event lasts about an hour and festive live Christmas music will be provided by Advent's own talented musicians. Please use the sign-up sheet in the narthex so that we can plan accordingly. All family members and friends are welcome to attend. Thank you!

### **YOUR INVITATION TO SING**

Advent's Vocal Choir invites you to sing with the choir during Advent and Christmas seasons! Join us for Wednesday rehearsals on December 7, 14 and 21 at 7:15-8:00 p.m. We'll spread the joy of Christmas through music – together.



### **ALWAYS FUN MEN'S BREAKFAST SATURDAY, DECEMBER 10**

On Saturday, December 10 at 8:30 a.m. we will be celebrating the Christmas Season with the all time military favorite breakfast. Even those never in the military will enjoy. Coffee is ready by 7:30 a.m. **Dave**



### **ANNUAL CHRISTMAS CONCERT – SATURDAY, DECEMBER 17**

The annual holiday concert will be held on **Saturday evening, December 17, 2022, at 7:30 p.m.** under the direction of our organist and choir director, Michael Dettra. You can look forward to kicking off the holidays with an hour of relaxation and entertainment. Light refreshments will be served.



### **NO SUNDAY SCHOOL CLASS - DEC 25 OR JAN 1**

Our upcoming Sunday School lessons will feature Advent and Christmas lessons beginning on November 27. Please note: There will be no Sunday School classes on December 25 or January 1. Classes will resume on January 8, with our Epiphany lesson.

### **CONGREGATIONAL MEETING UPDATE**

At the Congregational Meeting on November 20, 2022, the Budget for 2023 was approved by a unanimous vote. The 2023 Budget is approximately 4% higher than 2022 Budget. Pastor gave an overview of his Strategic Mission Plan for the future of Advent. This will be discussed in more depth at the next Congregational meeting in February. Elections for Church Council members were held. There are five positions open on Church Council. Cindy Frey and John Flint were re-elected to two of the positions.



### **GIVE US YOUR SMILE!**

Do you find that you have gotten used to ordering online and prefer that over endless shopping around for sales? If so, consider using Smile.Amazon.com for your shopping and shipping needs. This acts the same as an Amazon account, but Amazon Smile Foundation will donate .5% of your purchases to the charity of your choice. Simply indicate Advent Lutheran Church, Richboro as your charity and the church will benefit. No cost is added to you. Advent has received donations of \$516.24 as of June, 2022 from the Amazon Smile Foundation since 2016, when we signed up. If you need help setting up your account, call or text me ( Gail Oines ) at 215-534-8218.



### **ALTAR FLOWER DEDICATION**

There are numerous dates available for 2022 to dedicate flowers to beautify the altar each Sunday. Please sign up on the sheet on the table in the narthex with your name and dedication. Two bouquets are available each week. The cost is \$25 per bouquet. In addition to making the altar more beautiful, you take the flowers home after the late service to enjoy during the week. If you have any questions call Cindy Frey 267-205-0713.



### **FELLOWSHIP TIME**

We need committees or individuals to sign up to provide refreshments after the 9:00 a.m. service. The sign-up sheet through August is on the fellowship table. Advent supplies hot beverages (i.e. coffee & tea) and all paper products.



### **STITCH CLUB ITEMS AVAILABLE**

Stitch club items are **available throughout the year**. If you need any of the items made by the Stitch Club, i.e., blankets, hats, baby items, please contact Hanna McCollum 215- 962- 9032 or Jeff Jobes 215-355-4149.



### **THE ARMED FORCES**

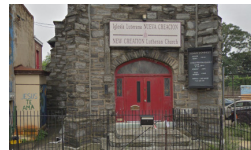
Please keep in your prayers all our service men and women and especially those related to our congregation:

Colonel Andrew M Frey, Jr is serving as Command Center Director, NORAD/NORTHCOM, stationed at Peterson SFB, Colorado Springs, CO

US Army Ranger Liam McKendry, grandson of Pastor Jo Wright stationed in Fort Benning, GA

PFC Joseph Vanderstine, grandson of Alan and Rhona Slawter serving in the Middle East.

If there are any errors or omissions, please notify the church office. Thank you.



### **NUEVA CREACION LUTHERAN CHURCH**

Please keep Pastor Lyzette Rios Sanchez and our mission congregation Nueva Creación Lutheran Church in your prayers. Your mission support gifts help them to minister in an impoverished area of Philadelphia.

The sign-up sheets for Mission Support dedications for 2022 are in the narthex. The cost to dedicate one weekly bouquet is \$25.00. There are openings available through the end of the year.

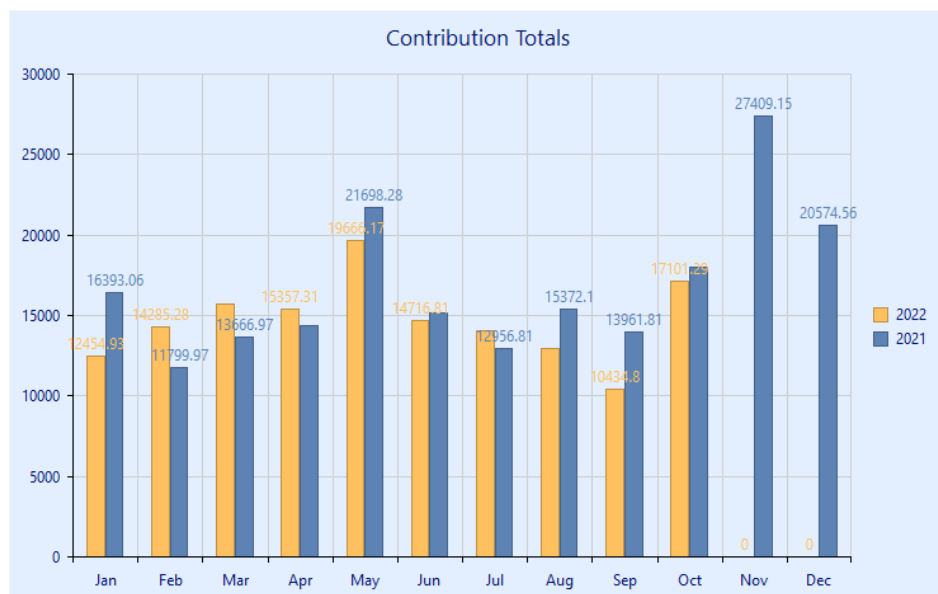
## FINANCE UPDATE

The Finance Committee and Church Council thank you for your financial support throughout the year. For the year-to-date period through October 2022, expenses have exceeded revenue by \$45,841. For the corresponding period last year, expenses exceeded revenue by \$28,295. The increase in the current year deficit compared to last year is a combination of reduced donations and increased expenses. Last year Advent qualified for a grant of \$21,500 through the Paycheck Protection Program, which was administered through the Small Business Administration. That grant is not reflected in last year's figures. Last year additional offerings in November and December reduced that deficit substantially. For those who are able, additional offerings to the "General" category on your offering envelopes would be much appreciated. Thank you.

Tony Gryszka, Finance Committee Chairperson

## 2023 STEWARDSHIP APPEAL

Advent will be conducting its 2023 Stewardship Appeal during the month of January. We are thankful for your financial support, as well as for the time and talents that you donate to the congregation and the community. Please keep Advent in your plans as you look ahead to the new year.



### **Income for October 2022**

|                                          |             |
|------------------------------------------|-------------|
| Benevolence (LWR, Mission Support, etc.) | \$ 680.00   |
| General Fund                             | \$13,418.29 |
| Mortgage Fund                            | \$ 3,003.00 |

Thanks to everyone for your continued financial support of the church this year. We greatly appreciate it. They are numerous ways to continue your offerings.

- Drop off your offering at the church office. The office is usually open on Tuesday, Wednesday and Thursday between 10 AM and 1 PM. Call to confirm hours.
- Mail a check to the church. The mailing address is "Advent Lutheran Church, PO Box 840, Richboro, PA 18954"
- Contribute online at [www.adventrichboro.org](http://www.adventrichboro.org). At the top of the page, click the "Give Now" link to see frequently asked questions. At the bottom of the page click the "Give Now" link for our Giving platform. You may also choose to set up recurring donations or a one-time donation.

Again, thank you for your continued support. If you have any questions concerning your offering please call Cindy Frey, Financial Secretary 267-205-0713



## December

|    |                   |    |             |    |                |
|----|-------------------|----|-------------|----|----------------|
| 1  | George Morris III | 12 | Dawn Merk   | 26 | Judy Buttil    |
| 6  | Tom McQuiggan     | 21 | Ken Earle   |    | Victoria Flint |
| 10 | David Shearer     | 22 | Drew Frey   | 30 | Shirley Morris |
| 12 | Logan Frey        |    | Pastor Matt |    |                |

Please contact the church office if you or someone you know has been omitted from the list.  
Thank you.

### **SERVING IN WORSHIP - DECEMBER SCHEDULE**

#### **DECEMBER WORSHIP ASSISTANTS**

##### **8:00 a.m. Worship**

|       |              |
|-------|--------------|
| 12/04 | George Henry |
| 12/11 | Rose Herbert |
| 12/18 | Open         |

##### **9:30 a.m. Worship**

|       |                    |
|-------|--------------------|
| 12/04 | Gail Oines         |
| 12/11 | Jennifer McQuiggan |
| 12/18 | John Flint         |

#### **CHRISTMAS EVE SERVICES**

##### **SATURDAY, DECEMBER 24**

|           |                                                       |
|-----------|-------------------------------------------------------|
| 7:00 p.m. | Family Candle Light Service<br>with Communion<br>Open |
| 9:00 p.m. | Candlelight Service<br>with Communion<br>Gail Oines   |

#### **CHRISTMAS DAY DECEMBER 25**

|           |         |              |
|-----------|---------|--------------|
| 9:00 a.m. | Worship | Rose Herbert |
|-----------|---------|--------------|

#### **ALTAR GUILD**

|           |                                             |
|-----------|---------------------------------------------|
| 8:00 A.M. | Hanna McCollum                              |
| 9:30 A.M. | Gail Oines, Nancy Sclight, Rhona<br>Slawter |



#### **OUR TECH CREW**

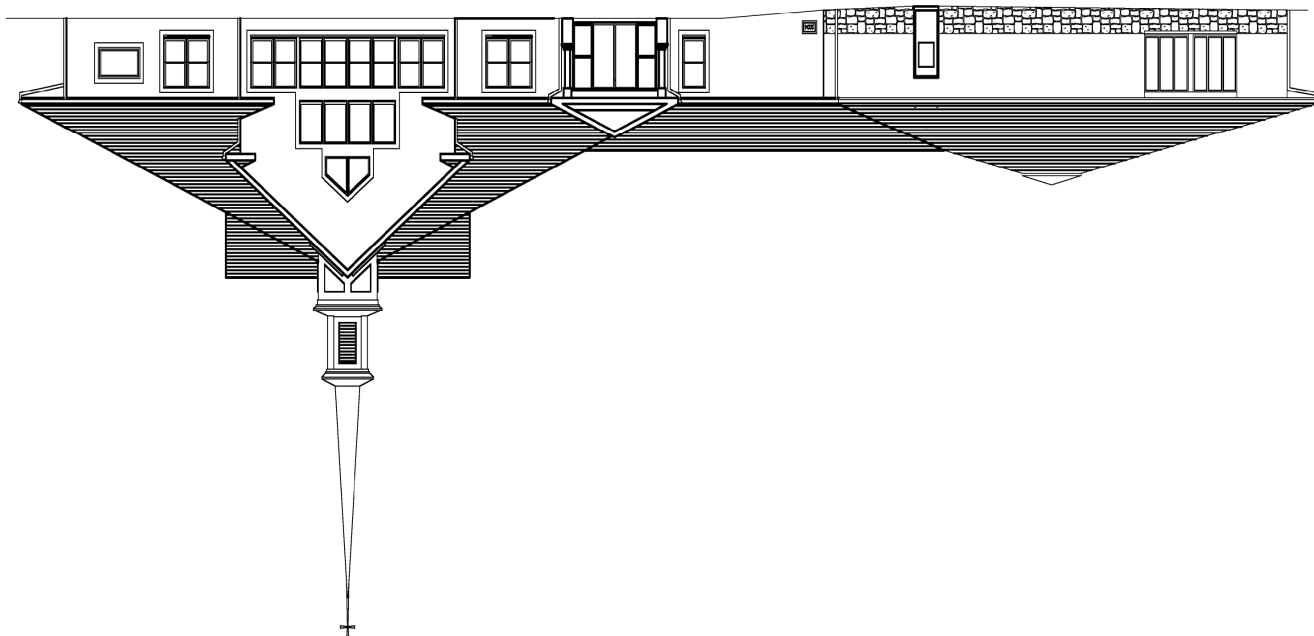
Mike Dettra, Tony Gryszka, Gary Zimmerman

#### **FLOWER DISTRIBUTION**

Linda Brownlee, Audrey Savchuck, Nancy  
Sclight, Rhona Slawter

# December

| Sunday                                                                                                                                                                                                                                                                         | Monday                             | Tuesday | Wednesday                                                                                  | Thursday | Friday                       | Saturday                                                                                                                                                |
|--------------------------------------------------------------------------------------------------------------------------------------------------------------------------------------------------------------------------------------------------------------------------------|------------------------------------|---------|--------------------------------------------------------------------------------------------|----------|------------------------------|---------------------------------------------------------------------------------------------------------------------------------------------------------|
|                                                                                                                                                                                                                                                                                |                                    |         |                                                                                            | 1        | 2                            | 3<br>10:00 AM -Noon Stitch Club                                                                                                                         |
| 4<br><u>2<sup>nd</sup> Sunday of Advent</u><br>8:00 AM Traditional<br>Holy Communion<br>9:00 AM Adult Bible Study<br>9:30 AM Contemporary<br>Holy Communion<br>Sunday School age 4 - gr. 6<br>10:30 AM Christmas Brunch                                                        | 5<br>7:30 PM<br>A.A. Open Meeting  | 6       | 7<br>6:30 PM Praise<br>Team Choir<br>Rehearsal<br><br>7:15 PM Vocal<br>Choir<br>Rehearsal  | 8        | 9<br>7:30 PM A.A. Step Mtg.  | 10<br>8:30 AM Men's Breakfast<br><br>10:00 AM -Noon Stitch Club                                                                                         |
| 11<br><u>3<sup>rd</sup> Sunday of Advent</u><br>8:00 AM Traditional<br>Holy Communion<br>9:00 AM Adult Bible Study<br>9:30 AM Contemporary<br>Holy Communion<br>Sunday School age 4 - gr. 6<br>10:30 AM Fellowship Time:<br>George Henry<br>10:45 AM Church Council<br>Meeting | 12<br>7:30 PM<br>A.A. Open Meeting | 13      | 14<br>6:30 PM Praise<br>Team Choir<br>Rehearsal<br><br>7:15 PM Vocal<br>Choir<br>Rehearsal | 15       | 16<br>7:30 PM A.A. Step Mtg. | 17<br>10:00 AM -Noon Stitch Club                                                                                                                        |
| 18<br><u>4<sup>th</sup> Sunday of Advent</u><br>8:00 AM Traditional<br>Holy Communion<br>9:00 AM Adult Bible Study<br>9:30 AM Contemporary<br>Holy Communion<br>Sunday School age 4 - gr. 6<br>10:30 AM Fellowship Time:<br>Open<br>10:45 AM Adult Bible Study                 | 19<br>7:30 PM<br>A.A. Open Meeting | 20      | 21<br>6:30 PM Praise<br>Team Choir<br>Rehearsal<br><br>7:15 PM Vocal<br>Choir<br>Rehearsal | 22       | 23<br>7:30 PM A.A. Step Mtg. | 24<br>Christmas Eve Services<br><br>7:00 PM Family Candlelight<br>Service w Holy Communion<br><br>9:00 PM Candlelight<br>Service with Holy<br>Communion |
| 25<br><u>Nativity of Our Lord</u><br><br>9:00 AM Holy Communion<br>Service                                                                                                                  | 26<br>7:30 PM<br>A.A. Open Meeting | 27      | 28                                                                                         | 29       | 30<br>7:30 PM A.A. Step Mtg. | 31<br>                                                             |



*Advent Evangelical Lutheran Church*

Second Street Pike & Worthington Mill Rd.

P.O. Box 840

Richboro, PA18954-0840

Address Service Requested